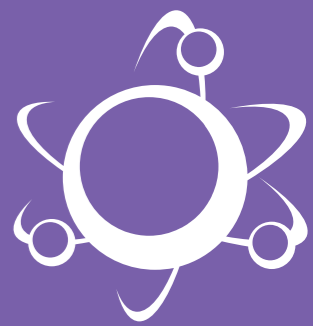




Atomes is a Canadian company with more than 20 affiliate companies responsible over marketing its technology. Atomes is operating all over the globe with more than 150 distributors. Atomes signed R&D projects with the biggest companies worldwide accordingly they are buying formulas and private label from Atomes and it is responsible over the R&D of lot of governmental institutes & universities in North America and United State.

Research and development at Atomes is the primary activity of the firm. Every year Atomes registers several breakthroughs, adding more patents to its already impressive list of "Unique-Patented" products. All Atomes plants and technology carry a number of certifications and approvals such as, Drug Establishment License, Drug Identification Number (DIN), Health of Canada, Agriculture Of Canada, Canadian Food Inspection Agency CFIA, Pesticide Permit EPA, Ministère du Développement durable, Environnement et Parcs - Québec, Eco Seal, EcoLogo, FDA, and CE etc.

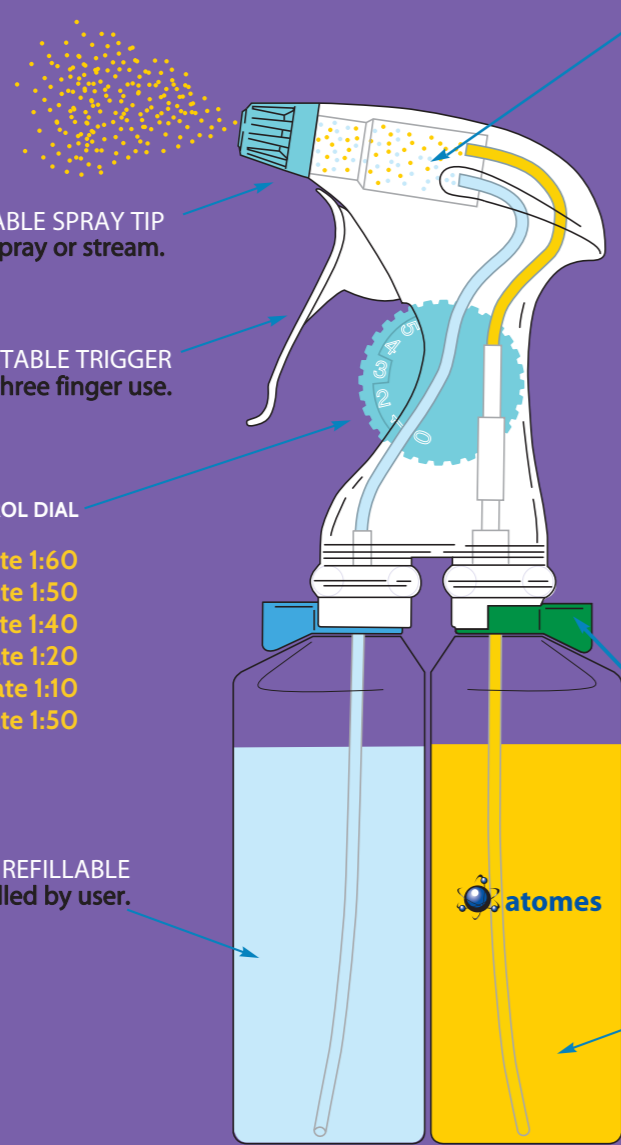
# ATOMES INNOVATION



## BIOKLEEN ALL® a single source cleaning solution

### THE SPRAYER BIOKLEEN ALL®

### CLEANING CARPETS TO A HIGHER STANDARD



**SPRAY HEAD**  
Spray head mixes the two liquids at the predetermined dilution ratio

**ADJUSTABLE SPRAY TIP**  
Tip adjusts to spray or stream.

**COMFORTABLE TRIGGER**  
Ergonomic trigger is designed for three finger use.

**CONTROL DIAL**

- #0: Dilution Rate 1:60
- #1: Dilution Rate 1:50
- #2: Dilution Rate 1:40
- #3: Dilution Rate 1:20
- #4: Dilution Rate 1:10
- #5: Dilution Rate 1:50

**WATER REFILLABLE**  
Water bottle easily refilled by user.

**BOTTLE LOCKS**  
Quarter-turn bottle locks allow bottles to be easily removed.

**CONCENTRATE REFILLABLE**  
Concentrate bottle easily refilled by user.

1. Turn the blue & green tabs clockwise to the off position, remove the spray head.
2. Fill the "solution bottle" to the bottle shoulder line.
3. Fill the "water bottle" to the bottle shoulder line using water from your tap.
4. Replace the spray head and turn the blue and green tabs to the "ON" position. This will now lock your bottles in place.
5. Select a level of dilution, dial it in and off you go.

Atomes Fd. Inc.

## THE INNOVATION

BIOKLEEN ALL<sup>®</sup> providing high detergency and excellent cleaning capabilities specifically designed for the soft surface cleaning of carpets, upholstery, and fabrics. Unique odor control technology featuring microencapsulation for immediate effects and supreme biological activity for complete odor neutralization through degrading of odor-causing sources deep within the carpet fibers, padding, and at sub-floor levels

BIOKLEEN ALL<sup>®</sup> has an excellent cleaning performance specially designed to treat all types of stains including pet stains. it is suitable for both applications MANUAL and MECHANICAL leaving a fresh scent after the application.

BIOKLEEN ALL<sup>®</sup> is completely Safe to handle, Unique & Patented Biotechnology based, Non-Toxic, Non-Harsh, Non-Corrosive, Non-Carcinogenic, Environment Friendly, Biodegradable and Fragrance Free.

## THE MECHANISM

BIOKLEEN ALL<sup>®</sup> has a blend of Specialized nonionic and natural Bio-Surfactant for superior cleaning, detergency, and fiber conditioning.

- Easy removal of oily and greasy soils
- Conditions fibers to prevent re-soiling
- Readily biodegradable
- Low toxicity compared to old technology Petroleum-derived surfactants

BIOKLEEN ALL<sup>®</sup> has a Defoaming capability

- Newly sourced biodegradable defoamer
- Powerful foam control capabilities
- Food-grade and not like the Silicone Based Defoamers
- Safer for the environment
- Safer for operations

BIOKLEEN ALL<sup>®</sup> has Enzyme Package Initially boost in performance. it is a blend of 4 enzymes

- Higher addition based on common soils and stains
- Protease | Lipase | Amylase | Cellulase
- Hard Stains easy Removal such as: Oil, Grease, Cosmetics, Milk, Sodas, Wine, Juices, Coffee, other foods, Urine, blood, vomit, feces beverages, , etc.

BIOKLEEN ALL<sup>®</sup> has Chelating Package and Bio-Micropolymer which:

- Readily biodegradable complexing agents that remove free ions from cleaning solutions
- Binds hard water minerals that limit surfactant performance and detergency

BIOKLEEN ALL<sup>®</sup> has the ability to Odor Control

- Includes a fresh fragrance for instant odor control and gratification
- Incorporates unique odor encapsulation technology that encapsulates odor molecules and prevents odors from reaching odor sensory
- Readily Biodegradable
- Non Toxic
- Combination effect of immediate masking along with a long-term solution

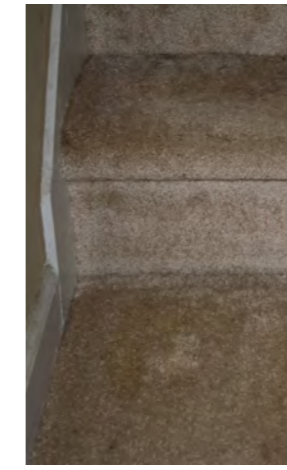
BIOKLEEN ALL<sup>®</sup> contains  $2.5 \times 10^{11}$  CFU / ml of Unique Patented 5 Strains of Non-Pathogenic Bacteria. with our biological advantage We chose:

- Our best protease producers to quickly control protein based stains
- Our best fat, oil, and grease degraders
- Our best cellulase and amylase producers for further stain reduction

BIOKLEEN ALL<sup>®</sup> has Natural Plant-Based Solvent will help in:

- Fiber lubrication for anti-resoiling properties
- Preventing soils from adhering to textile fibers
- Creating a natural protective coating with repelling properties
- Emulsifying of greasy, oily soils
- Lifting grease and oils from the surface
- Solubilizing the substance for easy removal
- Enzyme stability, Allowing enzyme activity level to remain constant and guarding against denaturing

## THE PERFORMANCE



Pet stains removal. before and after application of Biokleen All



The picture above shows carpet swatches with ketchup (top left), chocolate syrup (middle), and used motor oil (bottom left). On the right are the treated stained swatches with Biokleen All



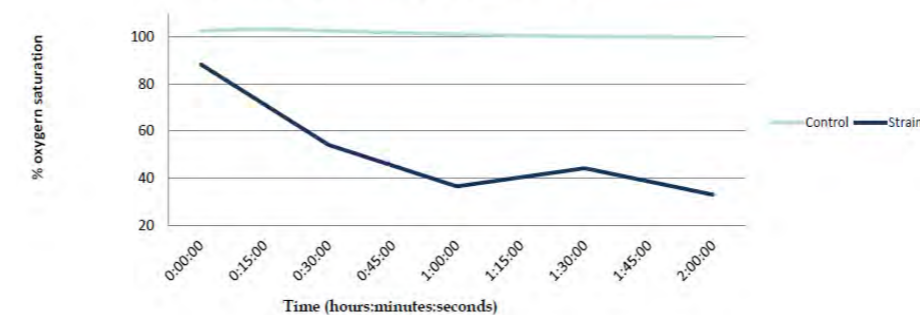
Ketchup stain on carpet swatch



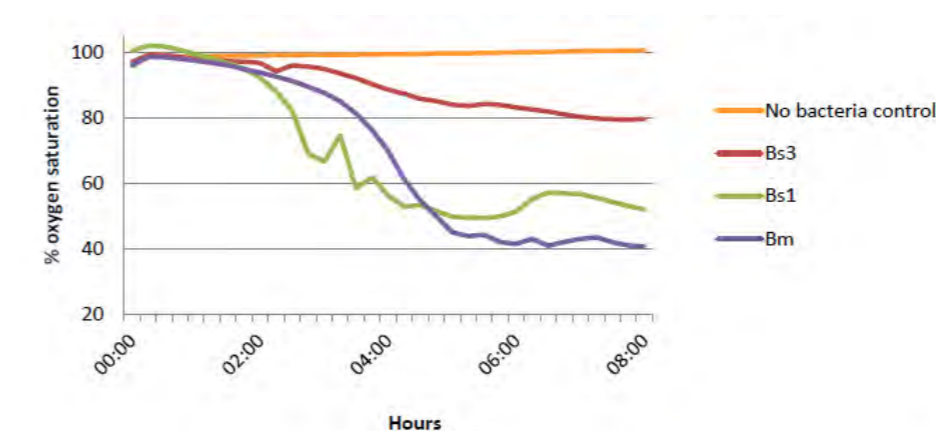
Same ketchup stain covered with tape before treatment



Same ketchup stain treated with biokleen product on the right.



The above graph shows the degradation of milk protein by one strain in Biokleen. This graph is very fascinating because casein is a very insoluble substrate and the Biokleen strain shows very rapid activity in the microplate reader. Milk was tested because it is a common household item that can be spilled onto a carpet.



This graph shows the ability of three of the better performing strains in Biokleen to degrade ketchup. In as little as 2 hours, the bacteria have started to degrade the ketchup, and have significantly degraded the material by 6 hours. This illustrates the added benefit of beneficial bacteria to outstanding chemical formulations. The chemical does the initial cleaning, the bacteria does the deep cleaning of any residual organic buildup. This graph also shows the difference between bacillus species as they all have unique characteristics and enzymes that they produce.